

MODEL C24GA SERIES GAS CONVECTION STEAMER ON CABINET BASE



ANSI/NSF Standard #4

SPECIFICATIONS:

Two compartment gas convection steamer on cabinet base, Vulcan-Hart Model No. (C24GA6) (C24GA10). 304 series stainless steel exterior. Two stainless steel cooking compartments with coved interior corners. SuperHeated steam delivered from the 125,000 BTU/hr. high output stainless steel steam generator with staged water fill and 2 inch clean out port. Separate 60 minute timer with constant steam feature for each compartment. Heavy duty doors and door latch mechanisms. Stainless steel water resistant cabinet base. 6" adjustable stainless steel legs with flanged feet. 3/4" rear gas connection and gas pressure regulator. Requires 120/60/1 power supply, 2.0 amps maximum draw, with 6 foot power cord and 3 prong plug. Split water line connection. Treated and untreated water connections. 1 1/2" NPT drain connection.

Exterior dimensions:

6 pan: 24"w x 35.4"d x 63.7"h on 6" legs.

10 pan: 24"w x 35.4"d x 73.4"h on 6" legs.

CSA design certified. Certified to NSF Standard #4.

SPECIFY TYPE OF GAS WHEN ORDERING.

- C24GA6** 6 pan capacity
- C24GA10** 10 pan capacity

STANDARD FEATURES

- 304 series stainless steel exterior.
- Two stainless steel cooking compartments with coved interior corners.
- 125,000 BTU/hr. stainless steel steam generator with SuperHeated steam delivery system, staged water fill and 2" clean out port.
- Separate 60 minute timer with constant steam feature for each compartment.
- Heavy duty doors and door latch mechanisms.
- Stainless steel water resistant cabinet base.
- 6" adjustable stainless steel legs with flanged feet.
- 3/4" rear gas connection and gas pressure regulator.
- Elevation from sea level to 8,999 feet standard.
- Requires 120/60/1 power supply, 2.0 amps maximum draw.
- Split water line connection. Treated and untreated water connections. 1 1/2" NPT drain connection.
- One year limited parts and labor warranty.

OPTIONS

- Second year extended limited parts and labor warranty contract.
- Steamer Security Package, includes controls protected by lockable cover, perforated flue cover, security fasteners & tack-welds.

ACCESSORIES

- 12" x 20" stainless steel pans:
 - 1" deep (solid)(perforated) Qty.____.
 - 2 1/2" deep (solid)(perforated) Qty.____.
 - 4" deep (solid)(perforated) Qty.____.
- Stainless steel pan cover. Qty.____.
- Removable sliding self. Qty.____.
- Water treatment system.



MODEL C24GA SERIES

GAS CONVECTION STEAMER ON CABINET BASE

SERVICE CONNECTIONS:



Unless otherwise specified, Field Wire Electrical Connection to be 120/60/1 with grounding wire. Maximum amps 2.0.



DRAIN: Condenser box, compartment and generator, 1 1/2" NPT. (Provide an open air gap type drain within 12" of condenser box and for best results at a distance so steam vapors will not enter the steamer from underneath the control area. Do not connect solidly to any drain connection.)



GAS CONNECTION: 3/4" NPT. O.D. supply line required.



GENERATOR WATER SUPPLY: 3/4" Hose Bib fitting at 25-50 PSI (170-345 kPa).



CONDENSING WATER SUPPLY: 3/4" Hose Bib fitting at 25-50 PSI (170-345 kPa).

WATER QUALITY STATEMENT:

The fact that a water supply is potable is no guarantee that it is suitable for steam generation. Your water supply must be within these general guidelines:

SUPPLY PRESSURE	20 - 60 psig
HARDNESS*	less than 3 grains
SILICA	less than 13 ppm
TOTAL CHLORIDE	less than 4.0 ppm
pH RANGE	7-8
UN-DISSOLVED SOLIDS	less than 5 microns

* 17.1 ppm = 1 grain of hardness

Other factors affecting steam generation are iron content, amount of chlorination and dissolved gases. Water supplies vary from state to state and from locations within a state. Therefore it is necessary that the local water treatment specialist be consulted before the installation of any steam generating equipment

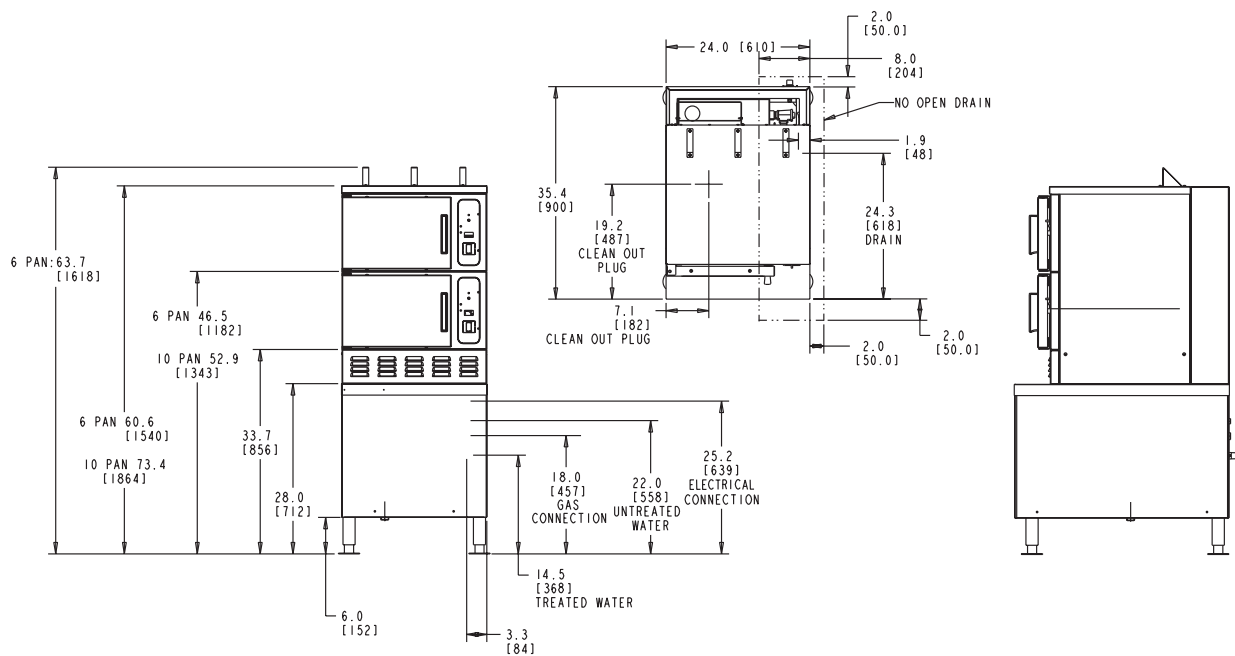
IMPORTANT:

1. A combination valve with pressure regulator is provided with this unit. Supply gas pressure should be a minimum: Natural gas 7" W.C., propane gas 11" W.C.
2. Gas line connecting to unit must be 3/4" or larger. If flexible connectors are used, the inside diameter must be at least the same as the 3/4" iron pipe.
3. An adequate ventilation system is required for commercial cooking equipment. Information may be obtained by writing to the National Fire Protection Association, Batterymarch Park, Quincy, MA 02289. When writing, refer to NFPA No. 96.
4. These units are manufactured for installation in accordance with ANSZ223.1A (latest edition), National Fuel Gas Code. Copies may be obtained from the American Gas Association, 1515 Wilson Blvd., Arlington, VA 22209.
5. Clearance:

	Combustible	Non-Combustible
Rear	6"	0"
Left Side	0"	0"
Right side	0"	0"

NOTE:

- Dimensions which locate the above connections have a tolerance of + or - 3" (+ or - 75mm). Normal dimensions are in inches. Dimensions in () are in millimeters.
- Installation of backflow preventer's, vacuum breakers and other specific code requirements is the responsibility of the owner and installer. It is the responsibility of the owner and installer to comply with local codes.
- Plastic drains are not recommended due to inherent limited temperatures of the plastic. Boiler purge temperatures may exceed 180°F. The installer may be required to provide means to reduce boiler purge water temperatures to be that of the condensate temperature of 140°F or below.
- Do not connect this unit to a ground-fault circuit-interrupter (GFCI) 125-volt, single-phase, 15- and 20-ampere receptacle. Electronic burner ignition systems are prone to nuisance tripping and possible ignition failure.
- This appliance is manufactured for commercial installation only and is not intended for home use.



NOTE: In line with its policy to continually improve its products, Vulcan-Hart Company reserves the right to change materials and specifications without notice.